

Band	1695-2400 x2 / 3400-3800 x2 / 5150-5925
Polarization	XX / XX / X
Half-power Beam Width	70°



Model: DKP7WDKDP-1075F [Directional Panel Antenna] Rev.05

Features

- Directional panel antenna for outdoor DAS and stadium/venue applications
 - 4x ports for AWS/PCS/WCS band 1695-2400 MHz
 - 4x ports for CBRS band 3400-3800 MHz
 - 2x ports for U-NII band 5150-5925 MHz*
 - Ideal for multi-carrier or 4x4 MIMO deployments
 - Bracket available for pole mount
 - Available with 4.3-10(F) connectors
- * This antenna meets the FCC testing requirements for UNII-1 band for gain and upper side-lobe performance.
Compliance to 789033 D02 General U-NII Test Procedures New Rules v01404.

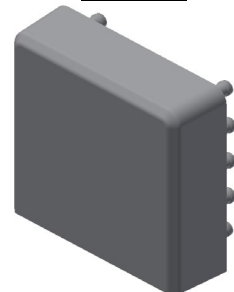
Electrical Specifications

Operating Frequency Band ,[MHz]	1695 - 2400 x2 / 3400 - 3800 x2 / 5150 - 5925				
Frequency Range ,[MHz]	1695 - 1880	1920-2180	2180-2400	3400-3800	5150-5925
Polarization , [degrees]	±45° x2	±45° x2	±45° x2	±45° x2	±45°
Gain [dBi]	9	10	10	8	5.5
Horizontal Beam Width ,[degrees]	90	80	70	70	70
Vertical Beam Width ,[degrees]	40	35	30	70	25
Adjustable Electrical Downtilt,[degrees]	0 (Fixed)	0 (Fixed)	0 (Fixed)	0 (Fixed)	0 (Fixed)
VSWR	≤ 1.5	≤ 1.5	≤ 1.5	≤ 1.5	≤ 1.5
Isolation	Cross Polar, [dB]	≥ 25	≥ 25	≥ 25	≥ 25
	Inter Band, [dB]	≥ 20	≥ 20	≥ 20	≥ 20
3rd Order PIM@2x43dBm ,[dBc]	≤ -150	≤ -150	≤ -150	N/A	N/A
Maximum Input Power	100W	100W	100W	10W	5W
Impedance	50Ω	50Ω	50Ω	50Ω	50Ω
Lightning Protection	DC Ground	DC Ground	DC Ground	DC Ground	DC Ground

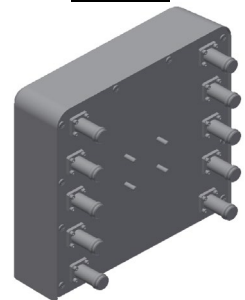
Mechanical Specifications

Radome Material	ASA
Connector Type	4.3-10 Female x10
Operating Temperature Range	-40 ~ +65°C (-40 ~ +149°F)
Operating Humidity	0 - 95%RH
Enclosure Protection	IP55
RF Connector Protection	IP67
Wind Load	109N @150 km/h (@93.3 mile/h)
Wind Velocity	200 km/h (124.3 mile/h)
Weight	3.5 kg (7.8 lb)
Dimension (Length x width x depth)	270 x 270 x 80 mm (10.63 x10.63 x3.15 inch)

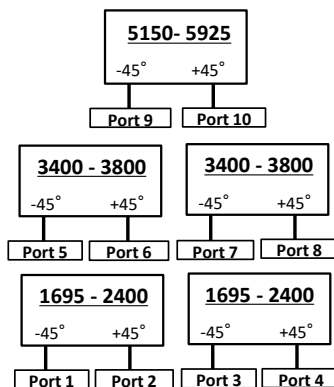
Front View



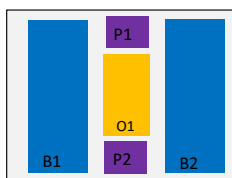
Rear View



Port Layout

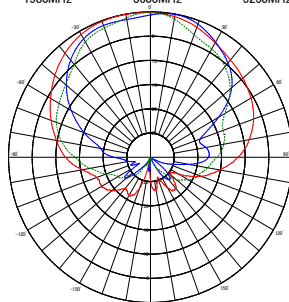


Antenna Array Configurations



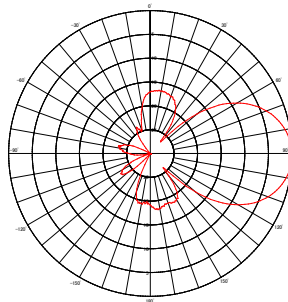
Horizontal Plane

1980MHz / 3600MHz / 5250MHz
 1980MHz 3600MHz 5250MHz



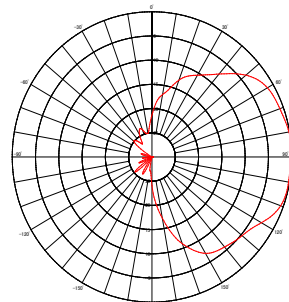
Vertical Plane

1980MHz



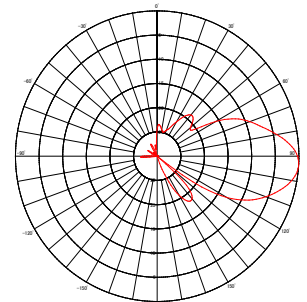
Vertical Plane

3600MHz

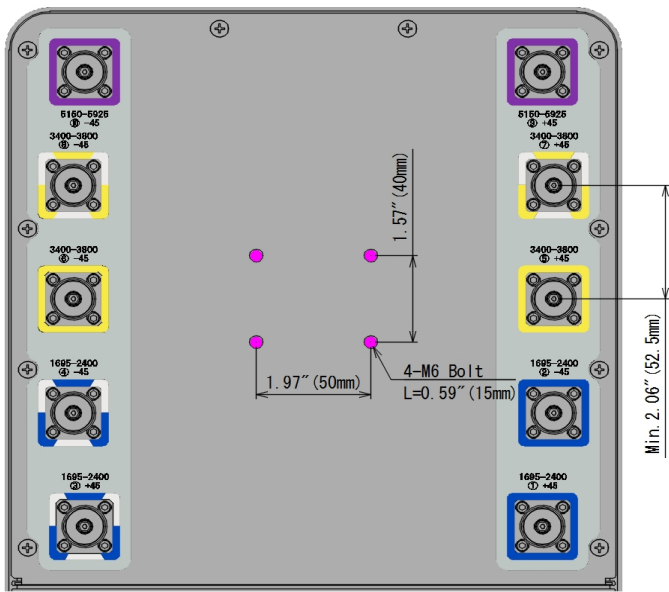


Vertical Plane

5250MHz



Antenna Outline and Bottom View



Ordering Option and Accessories

Mounting Bracket

Description	Part Number	Desing for reference
Pole Mount Bracket [Wind Velocity : 200 km/h (124.3 mile/h)] [Pole Diameter Range : Φ 1.18" - Φ 4.92" (Φ 30mm - Φ 125mm)] [Weight : 2.1 kg (4.6 lb)]	DKAB-S0312-VT	